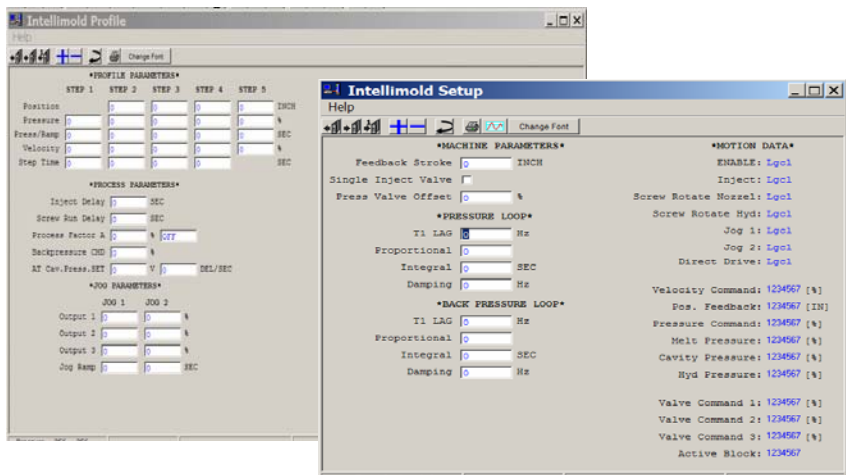


**Product:**

**Intellimold™ IMC Express (Integrated Melt Controller-Express) Bosch-Rexroth Version**

**View:**



**Description:**

EXPRESS – The EXPRESS retrofit integration gives real time closed loop pressure control with most basic inputs required to have control over the machine during injection.

Integrated Melt Control is an option offered by MGV Enterprises that allows Internal Melt Pressure feedback to influence or control the molding process. There are a variety of integrations that would allow practically any machine the capability of real time closed loop pressure control. The concept is based on feedback from 2 pressure sensors that monitor actual readings and compare them to a set point which is used to control the machines injection proportional valve. A transducer in the nozzle location verifies if the machine is at the set pressure. A transducer in the cavity, at end of fill, causes a proportional reaction when pressure is realized.

**For a detailed description of the Integrated Melt Control principle, see IMC.**

The Express system was developed as a low-cost add-on to existing injection machine controls to be available on the same controls platform.

**Required Components:**

For a basic ground-up integration, you will need a signal conditioning unit, and a sensor package. An optional pneumatic system is also available depending on the type and size of product you are molding.